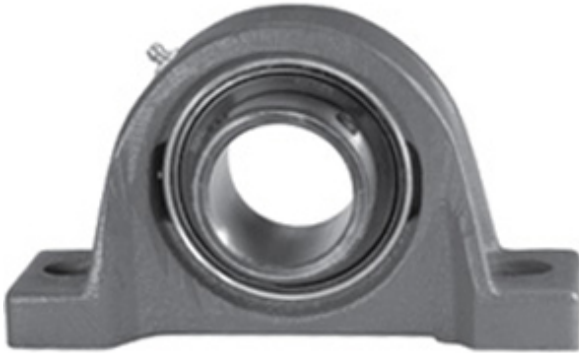




# Cixi Kent Bearing Co., Ltd.

2.188 Inch | 55.575 Millimeter x 2.25 Inch | 57.15 Millimeter x 2.438 Inch | 61.925 Millimeter LINK BELT PL3U235NK6 Pillow Block Bearings



PL3U235NK6 Bearing 2D drawings and 3D CAD models

Bearing No. PL3U235NK6

Category	Pillow Block Bearings
Inventory	0.0
Manufacturer Name	REXNORD
Minimum Buy Quantity	N/A
Weight	3.629
EAN	0662327819576
Product Group	M06110
Number of Mounting Holes	2
Mounting Method	Set Screw
Housing Style	2 Bolt Pillow Block
Rolling Element	Ball Bearing
Housing Material	Cast Iron
Expansion / Non-expansion	Non-expansion
Mounting Bolts	5/8 Inch
Relubricatable	Yes
Insert Part Number	UG235NL
Seals	Single Lip Contact
Housing Configuration	1 Piece Solid
Inch - Metric	Inch
Other Features	Single Row   Standard Duty   Low Base   Wide Inner Race
Long Description	2 Bolt Pillow Block; 2-3/16" Bore; 2-7/16" Base to Center Height; Set Screw Mount; Ball Bearing; Relubricatable;



## Cixi Kent Bearing Co., Ltd.

	Cast Iron; Single Lip Contact; Non-expansion
Category	Pillow Block
UNSPSC	31171511
Harmonized Tariff Code	8483.20.40.40
Noun	Bearing
Keyword String	Pillow Block
Manufacturer URL	<a href="http://www.rexnord.com">http://www.rexnord.com</a>
Manufacturer Item Number	PL3U235NK6
Weight / LBS	8
d	2.188 Inch   55.575 Millimeter
D	2.25 Inch   57.15 Millimeter
Bolt Spacing Minimum	0 Inch   0Millimeter
Nominal Bolt Center to Center	6.8 Inch   171.5 Millimeter
Actual Bolt Center to Center	6.8 Inch   171.5Millimeter
Bolt Spacing Maximum	0 Inch   0Millimeter
B	2.438 Inch   61.925 Millimeter