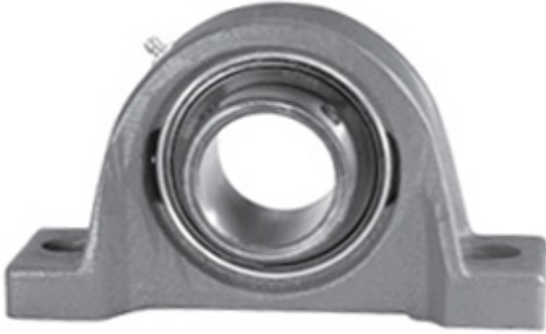




Cixi Kent Bearing Co., Ltd.

2 Inch | 50.8 Millimeter x 2.25 Inch | 57.15
 Millimeter x 2.5 Inch | 63.5 Millimeter LINK BELT
 P3U232JH18W4 Pillow Block Bearings



Bearing No. P3U232JH18W4

P3U232JH18W4 Bearing 2D drawings and 3D CAD models

Category	Pillow Block Bearings
Inventory	0.0
Manufacturer Name	REXNORD
Minimum Buy Quantity	N/A
Weight	4.536
EAN	0793699250350
Product Group	M06110
Number of Mounting Holes	2
Mounting Method	Set Screw
Housing Style	2 Bolt Pillow Block
Rolling Element	Ball Bearing
Housing Material	Cast Iron
Expansion / Non-expansion	Non-expansion
Mounting Bolts	5/8 Inch
Relubricatable	Yes
Insert Part Number	UG232HL
Seals	Floating Labyrinth
Housing Configuration	1 Piece Solid
Inch - Metric	Inch
Other Features	Single Row Standard Duty Standard Backing Wide Inner Race
Long Description	2 Bolt Pillow Block; 2" Bore; 2-1/2" Base to Center Height; Set Screw Mount; Ball Bearing; Relubricatable;



Cixi Kent Bearing Co., Ltd.

	Cast Iron; Floating Labyrinth; Non-expansion
Category	Pillow Block
UNSPSC	31171511
Harmonized Tariff Code	8483.20.40.40
Noun	Bearing
Keyword String	Pillow Block
Manufacturer URL	http://www.rexnord.com
Manufacturer Item Number	P3U232JH18W4
Manufacturer Internal Number	0125035
Weight / LBS	7.8
Bolt Spacing Minimum	0 Inch 0Millimeter
B	2.5 Inch 63.5 Millimeter
Nominal Bolt Center to Center	6.8 Inch 171.5 Millimeter
Bolt Spacing Maximum	0 Inch 0Millimeter
Actual Bolt Center to Center	6.8 Inch 171.5Millimeter
D	2.25 Inch 57.15 Millimeter
d	2 Inch 50.8 Millimeter